

Digital dental imaging

# EASY IS THE NEW SMART

Enhancing your workflows  
through innovation



x-mind  
prime 2

# x-mind prime 2

## Simple is the New Smart!

Today, the use of a multi-function imaging system blending 2D panoramic, cephalometric and CBCT imaging is essential in any dental procedure. The support of diagnostic CBCT images is becoming more and more important.

But installation and practical use of a scanner device can be complex: bulky devices, patient stress, patient installation procedures, image quality, diagnostic tools and data management.

Healthcare professionals are facing many different challenges.

**This is why we completely redesigned the X-MIND® prime to make it one of the most compact and easy to use digital all-in-one dental unit.**

**The combination of X-MIND® prime with the latest Acteon Imaging Suite allows you to exploit quality images and offer optimal diagnosis and treatment to your patients.**

**Streamline any step of your journey in dental imaging, either when scanning, making diagnosis or managing your practice.**





# Easy Acquisition Effective Workflow

X-MIND® prime has been engineered to make your daily operations faster and more efficient.

Its effortless and lightweight wall mounting solution, allows to quickly install it almost everywhere, ensuring the **maximum accessibility** in any context, for both standing or sitting patients.

Its clean and neat user interface with finely designed workflows is intended to fulfill your daily tasks with the minimum number of steps, to take you straight to the result.

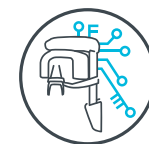


The innovation shaping beauty

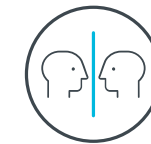
**Easy. Effective. Simply X-MIND® prime.**

## Ergonomic and user-friendly design

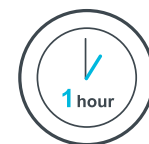
Reduce operator interventions and increase patient comfort



Stylish and smooth design underlying a **cutting-edge technology**.



Easy and fast **face-to-face patient positioning**.



**Fast installation**  
X-MIND® prime is ready to install! Delivered completely assembled at your practice, you are all set-up in only one hour.



Ergonomic head positioner with centering references **optimized to improve the accuracy in positioning** and reduce the incidence of movements during scanning in cephalometric mode.



**Full accessibility** for standing or sitting patient thanks to its **zero footprint**.



**Automatic FOV centering**, LED light chin rest recognition.



Straightforward operator **user interface console**.

Essential and ease to use **control panel**.



## Strong hardware

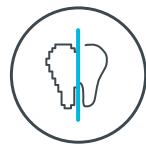
A strong hardware combined with a smart software to fast diagnostic.

### Elevate your clinical performances

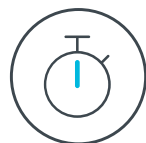
Whatever your specialty in dentistry, the quality of the diagnosis is a pillar of a clinical workflow to guarantee successful analysis, treatment plan, procedure and outcomes.

On X-MIND® prime, a complete choice of exam modalities combined with a premium-class image quality will get you the ability to successfully handle any patient type in any clinical landscape.

### Last detection technologies for high technical performance



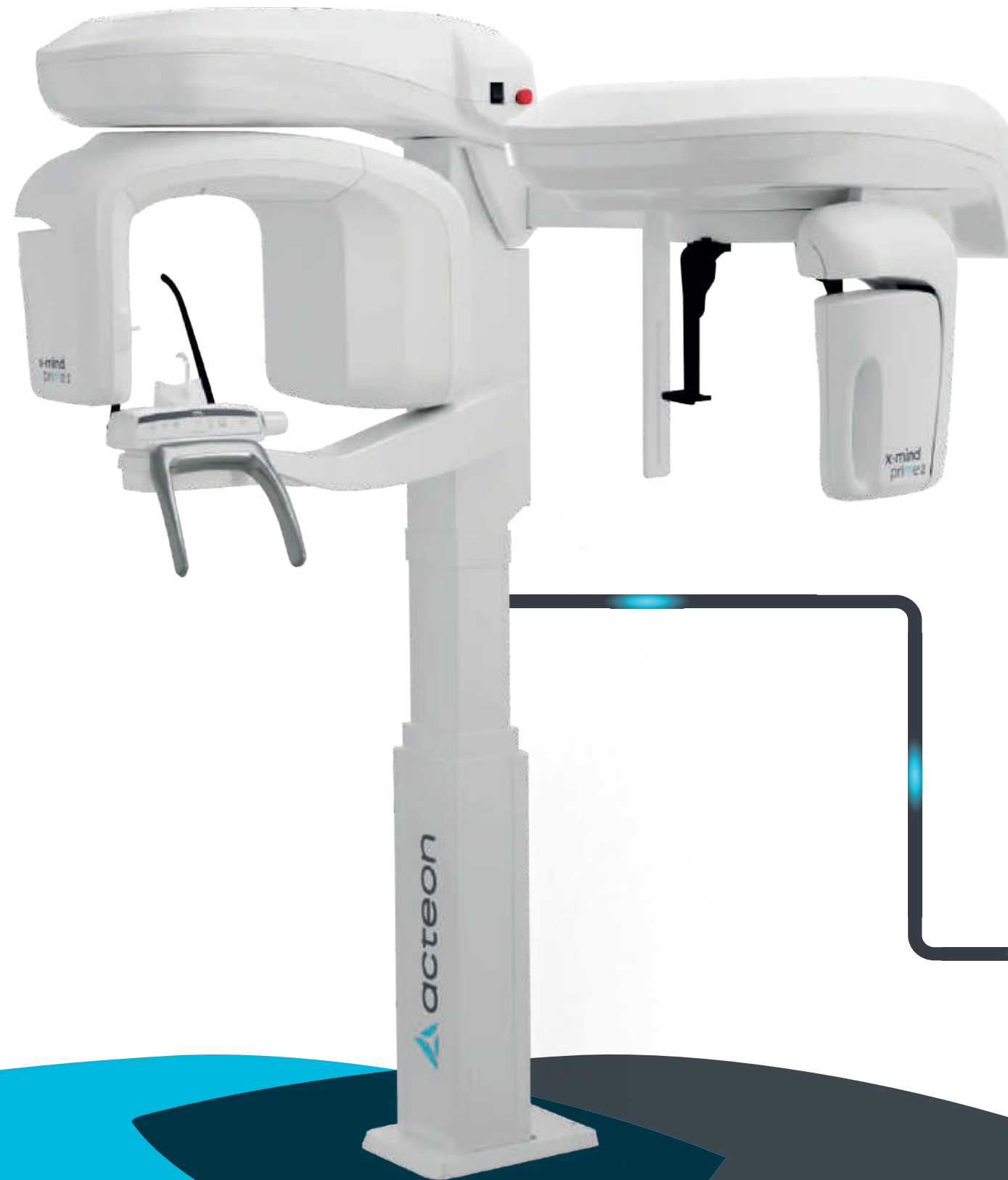
**High resolution image,**  
up to 75µm of voxel size



**Fast acquisition**



**SMAR-T option,**  
the innovative Selective Metal  
Artifacts Reduction Tool

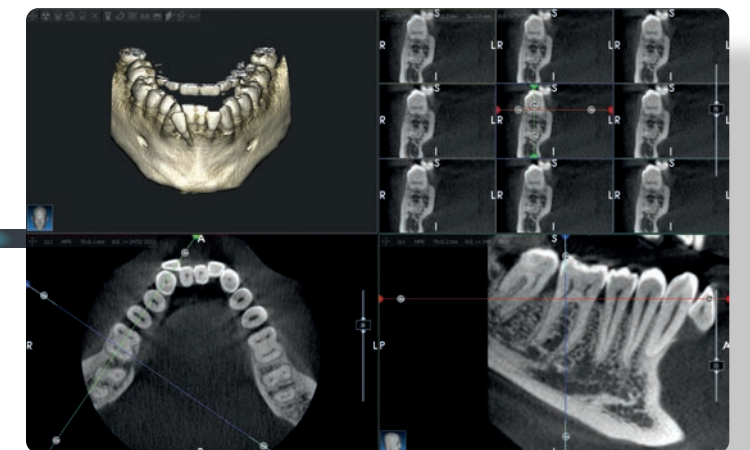


## Smart Software

acteon   
imaging suite

### 56 2D and 3D programs

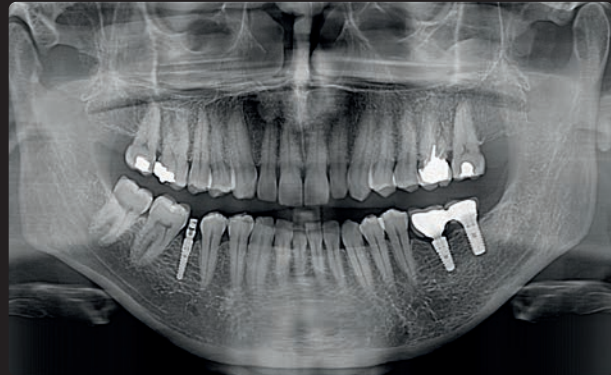
- Easy interface to use
- Complete 3D diagnostic tools, powered by AIS3DAPP, to fully exploit the clinical content from your cases
- The Implant Planning Wizard combined with a Cloud implant library allows you to easily and safely plan your surgery in just a few clicks
- The Surgical Guide Design option brings your planning to the surgical room with the highest fidelity possible with a custom designed surgical stent
- Effective patient engagement : export to portable viewer and involve the patient in the diagnostic process and raise his awareness to boost case acceptance



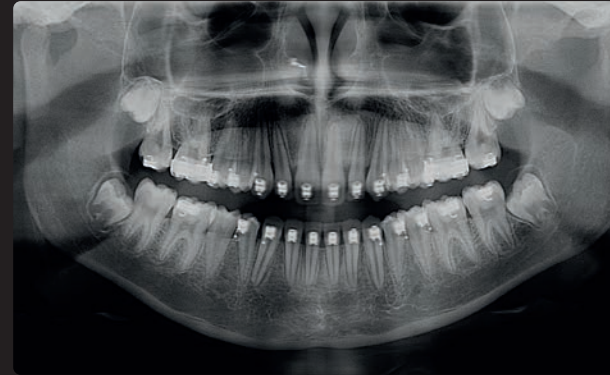


# Everyday. For any case

For either general or specialist dentistry, with X-MIND® prime you will always rely on high quality images and powerful imaging tools, to succeed in diagnosis and treatment planning.



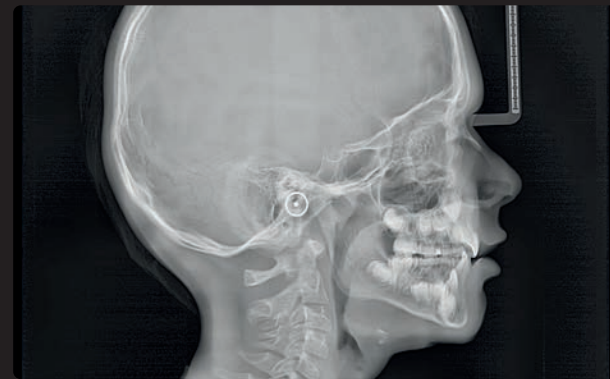
Panoramic standard - Implantology case assessment



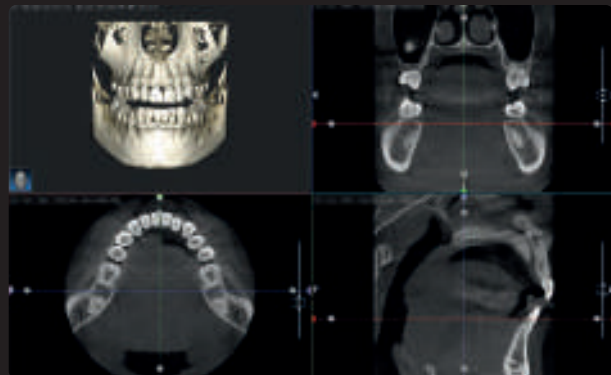
Panoramic standard - Orthodontic treatment check-up



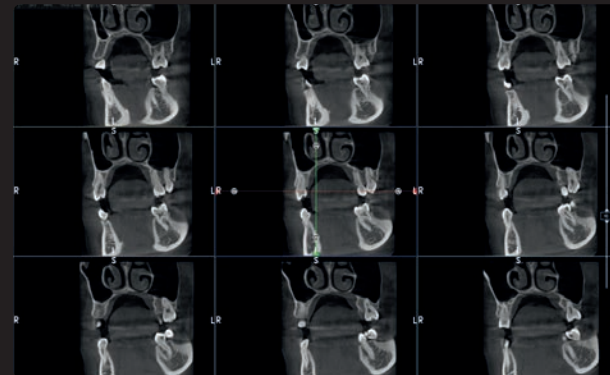
Ceph 24x30 LL - Orthodontic treatment follow-up



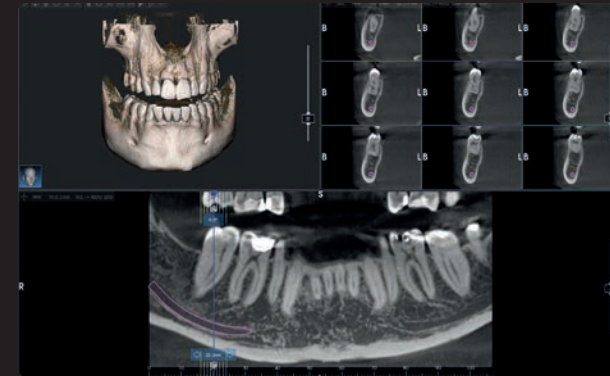
Ceph 24x30 LL - Clinical evaluation



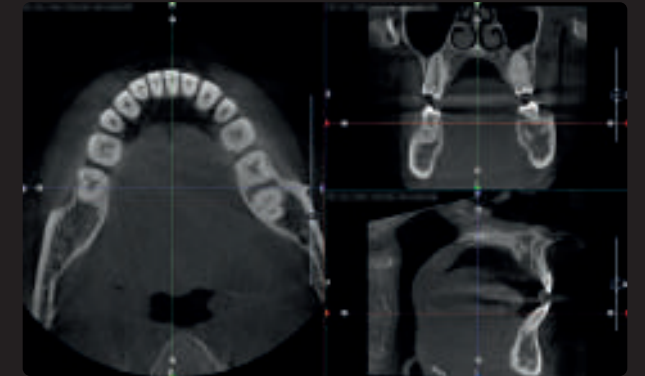
3D Full dentition - Multiplanar Reconstruction



3D Full dentition - Cross sections 3x3 layout



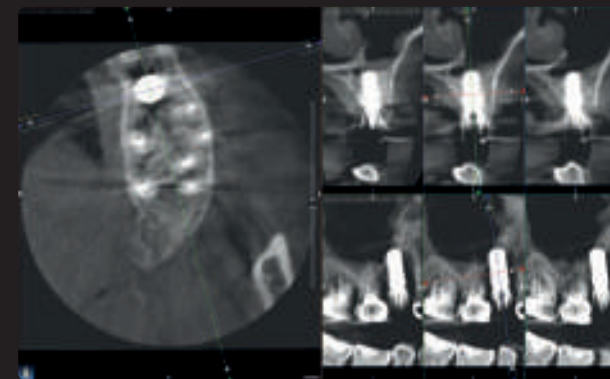
3D full dentition - Curved Planar Reconstruction



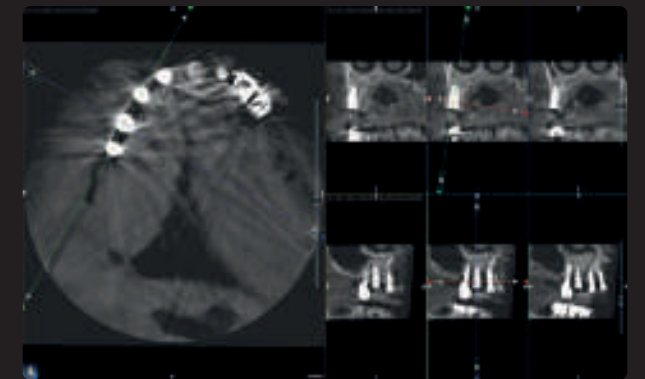
Extended view - Multiplanar Reconstruction

**SMAR-T option: with the brand new Selective Metal Artifacts Reduction Tool** and its capability of automatically set up case by case the best threshold for compensating beam hardening effects due to the presence of implants, fillings or prosthesis you will rely on:

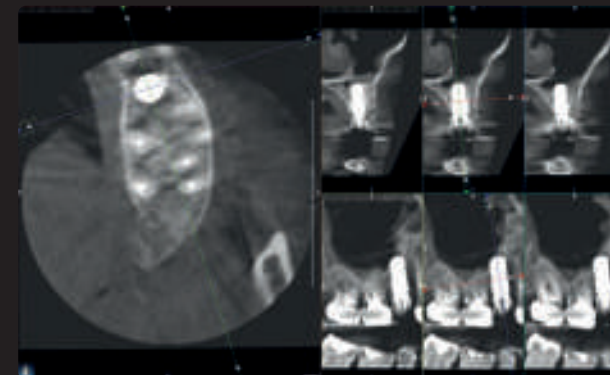
- higher diagnostic capabilities
- minimized risk of retakes
- increase of treatment success rate



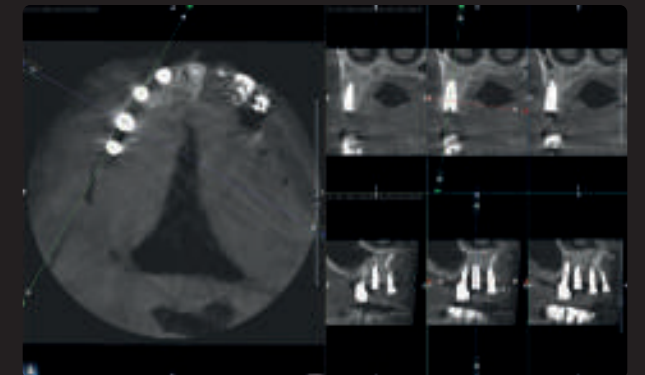
3D Teeth Maxillary - no processing applied



3D Single Jaw Maxillary - no processing applied



3D Teeth Maxillary - SMAR-T filter applied



3D Single Jaw Maxillary - SMAR-T filter applied



# Powerful Ecosystem Efficient Organization

## Strengthen your assets, raise up your business.

AIS 5 is ready to be the unique imaging platform of your clinic!

It's designed to be scaled following your activity and to adapt to any environment size thanks to its powerful network capabilities, empowering the efficiency of your workflows and leaving you the peace of mind to grow your business.

- ✔ Easy data access and options management via one system administrator.
- ✔ Immediate availability and synchronization of your data through the whole practice
- ✔ Encrypted and constantly backed-up database for easy data recovery
- ✔ Direct connection to your patient management system

With X-MIND® prime equipped with AIS 5, you will rely on an innovating way to manage all your ACTEON® devices in a unique centralized solution.



# Value your time, leave us the issues with CM Suite!

## Faster and more targeted support.

- Be part of the network that never leave you alone. The innovative CM-Suite tracks the health of your system and allows for a responsive action in case of issues.
- Rely on CM-Suite to have your devices always healthy and ready for the next task.
- Keep your data constantly backed up, to be easily recoverable in case of damages to your storage and seamlessly migrated in case of moving.

## Simplified service and maintenance.

- Reduced risk of installation errors
- Improved reliability
- Steep learning curve for distributors
- Improved service performances



# Meet the Prime Family

X-MIND® prime is available in four models, 2D wall mounted, 3D wall mounted, 2D ceph and 3D ceph, to suit any installation setup and clinical need.



## X-MIND® prime 2D ceph

Cephalometric add-on for a full 2D system still encompassing the same philosophy of prime, **ideal for pediatric applications.**

## X-MIND® prime 2D wall mounted

The ACTEON®'s smallest extraoral 2D imaging solution ever for the **maximum accessibility in any context.**

## X-MIND® prime 3D wall mounted

**Cutting-edge CBCT technology** enclosed in an essential and elegant style, fitting almost any space, **even the narrowest ones.**

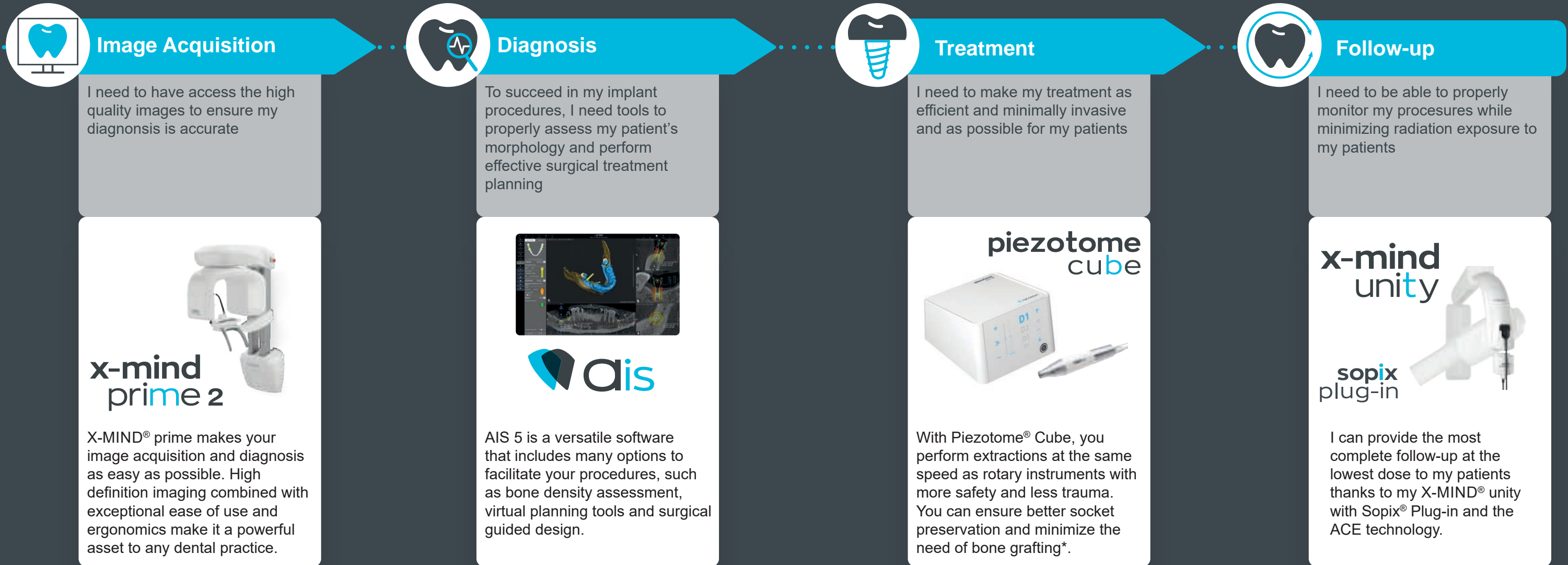
## X-MIND® prime 3D ceph

**The most comprehensive all-in-one** ACTEON® imaging solution, all you need to successfully handle any patient type in any clinical landscape... always at your fingertips.



# About Implantology workflow

ACTEON®'s implantology workflow leverages its expertise in different areas of the dental care pathway to help practitioners address some of the challenges associated with implantology to facilitate treatment, reduce treatment costs, increase surgical success, reduce chair time and improve the patient experience.



## Image Acquisition

I need to have access the high quality images to ensure my diagnosis is accurate



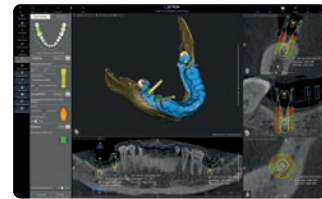
**x-mind prime 2**

X-MIND® prime makes your image acquisition and diagnosis as easy as possible. High definition imaging combined with exceptional ease of use and ergonomics make it a powerful asset to any dental practice.



## Diagnosis

To succeed in my implant procedures, I need tools to properly assess my patient's morphology and perform effective surgical treatment planning



**ais**

AIS 5 is a versatile software that includes many options to facilitate your procedures, such as bone density assessment, virtual planning tools and surgical guided design.



## Treatment

I need to make my treatment as efficient and minimally invasive and as possible for my patients



**piezotome cube**

With Piezotome® Cube, you perform extractions at the same speed as rotary instruments with more safety and less trauma. You can ensure better socket preservation and minimize the need of bone grafting\*.



## Follow-up

I need to be able to properly monitor my procedures while minimizing radiation exposure to my patients



**x-mind unity**

**sopix plug-in**

I can provide the most complete follow-up at the lowest dose to my patients thanks to my X-MIND® unity with Sopix® Plug-in and the ACE technology.

\* Troedhan A, Kurrek A, Wainwright M. Ultrasonic Piezotome surgery: it is a benefit for our patients and does it extend surgery time? A retrospective comparative study on the removal of 100 impacted mandibular 3rd molars. Open Journal of Stomatology. 2011;1:179-184





## DE GÖTZEN

A company of ACTEON® Group

Strada Provinciale  
Busto-Cassano n.3,  
21054 - Fagnano Olona (VA)  
Italy

Tel: +39 0 331 376760

[info@acteongroup.com](mailto:info@acteongroup.com)

Follow-us



X-MIND® prime and X-MIND® prime 3D are manufactured by de Götzen (a company of the ACTEON® group) and distributed by ACTEON®. They are Class I medical devices with type B applied parts according to the IEC 60601-1 classification.

To obtain X-MIND® prime and X-MIND® prime 3D registration information in your country, please refer to your local sales manager.