

HELIOS series 500

MAKE DIGITAL AFFORDABLE
FOR EVERY DENTIST

No More Discomfort of Impressions, Benefit from Digitization Now.



Why HELIOS 500?

Fit for your budget

The price of HELIOS 500 is affordable for almost everyone, and at the same time, it provides high performance.



Improve your digital workflow

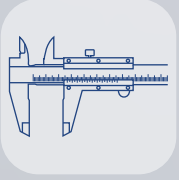
One of the most accurate and fastest scanners on the market.

Free your hands

Automatic and adaptive calibration, manual calibration is not necessary any more.

Make your experience comfortable

Smaller and lighter while achieving a 16mm x 14mm high-definition field of view. More friendly to people with sensitive teeth. (*The air duct inside the body has been upgraded.)



Accuracy

As one of the most accurate scanners on the market, HELIOS 500 has reached the state-of-the-art accuracy level- the average deviation of a in-vivo full arch scan is around 20.0µm.



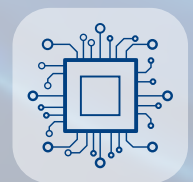
Speed

Scan a full arch in less than 30 seconds with HELIOS 500.



Weight

Only 185 grams, one of the most lightweight scanners on the market, well-balanced, ergonomically designed, and easy to carry.



AI technology

AI technology filters the soft and moving tissues, offering users a smooth scanning experience and generating a natural-looking treatment outcomes.

USB port for power delivery and data transfer.
Replaceable with Type-C port.

Button for switching the upper jaw, lower jaw
and bite mode.

Detachable cable

Firm body design
with durability

Attitude sensor for a
better interaction with customers.

HELIOS 500

2 optional sizes

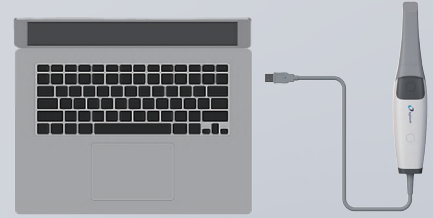
L
16mm x 14mm

S
12mm x 12mm

Removable and 180° reversible tip

Anti-Fogging
Powder-Free
LED light source

Plug&Scan



Smart Reminder



Automatic Software Update



Cloud Storage



Online 3D Viewer



Timely After-sales Service



Voice Note



Scanner Status Icons



Recommended System Requirements

Processor	Intel®Core™ i7 12th Generation, base frequency 2.4 GHz (or better)
Memory	16GB (or more) DDR4, frequency 2666 MHz (or better)
Hard Drive	256GB (or more) SSD
Graphics Card	NVIDIA®GeForce®GTX 1650 (or better)
Display	15.6" FHD (1920 x 1080) (or more)
Others	USB 3.0 port
Operation system	Windows 10/11
Optional	Touch screen

Specifications

HELIOS 500

Accuracy	Full-arch	20.0µm
	Scan area	16 x 14mm (L) 12 x 12mm (S)
Handpiece	Dimensions	217x54x24mm
	Weight	185g
Tip	Tip size(front part)	22x18mm(L)
		18.6x16.7mm(S)
Connectivity	Length	1.8m/Handpiece detachable
	Type	USB 3.0
Calibration	Accuracy calibration	Calibration-free
	Color calibration	Calibration-free
Data	Output format	STL/PLY