

# T-BRIGHT



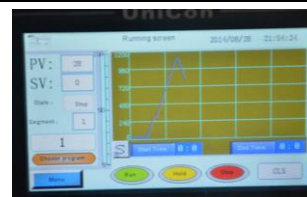
## Fast-speed Zirconia Sintering Furnace



**Chamber**



**MoSi2 Heating Element**



**Touch Screen**



**Sintering Tray**


### Main Specification:

Chamber size	Dia100 x HZ110mm
Max. temperature	1700 °C
Working temperature	1600 °C
Sintering mode	<ul style="list-style-type: none"> <li>● <b>Fast sintering: 90mins (80pcs crowns)</b></li> <li>● <b>Normal sintering: 3 layers sintering trays (150pcs crowns)</b></li> </ul>
Sintering program	<b>7 preset-programs for normal /fast /bridge /half mouth /clean</b>
Temperature control	<ul style="list-style-type: none"> <li>● <b>Automatic running with one-key touch</b></li> <li>● PID automatic control via SCR (Silicon Controlled Rectifier)power control with phase angle fired, current limiting resistor.</li> <li>● Touch screen panel which can store 30pcs different programs</li> <li>● Built in PID Auto-Tune function with overheating &amp; broken</li> </ul>

Add: No.2713,27 floor,21# building, No.28 Dong Feng Road, Zhengzhou City, China  
 Contact: Linda Lee Email: [amy@brofurnace.com](mailto:amy@brofurnace.com)

	thermocouple broken protection. <ul style="list-style-type: none"> <li>● Over temperature protection and alarm allows for operation without attendant</li> </ul>
Special design	<ul style="list-style-type: none"> <li>● <b>Pre-Baking for staining crowns</b></li> <li>● <b>Air circulating to remove impurities</b></li> </ul>
Heating rate	0-40 °C /min
Thermocouple	B type
Temperature accuracy	+/- 1 °C
Heating element	High purity U type MoSi <sub>2</sub> Heating element, less iron components, no pollution to zirconia during sintering(4PCS)
Furnace structure	Double layer steel casing with dual cooling fan, temperature of furnace shell below 60 °C
Furnace liner	Imported ceramic fiber insulation materials <ul style="list-style-type: none"> <li>● First layer: 1800° C ceramic fiber board</li> <li>● Second layer: 1600° C ceramic fiber board</li> <li>● Third layer: 1260° C ceramic fiber board</li> </ul>
Working voltage	220V 50/60HZ single phase
Max. Power	2KW
Overall dimension	480x635x840mm
Stand Parts	1 pcs MoSi <sub>2</sub> elements as spare, 1 pc B type thermocouple, 1 pc sintering tray, 1 bag zirconia beads.
Net weight	90kgs
Payment terms	T/T in advance
Delivery time	20 days after receiving payment

*The quotation also include following accessories, to ensure customer can use the furnace Immediately once receiving it.*

	<p><b>Heating elements (4pcs in furnace,1pc as spare)</b>                  1700C type "U" MoSi<sub>2</sub> heating elements</p>
---	---

Add: No.2713,27 floor,21# building, No.28 Dong Feng Road, Zhengzhou City, China  
 Contact: Linda Lee  
 Email: [amy@brofurnace.com](mailto:amy@brofurnace.com)

	<p><b>Thermocouple 1pc:</b>                  "B" type dia0.4mm Pt-Rh to Pt-Rh wire                  Outer is purity 99.8% ceramic protection tube</p>
	<p><b>Furnace tray 1 sets</b>                  Made of Al<sub>2</sub>O<sub>3</sub> fiber, to bear 1700C high temperature</p>
	<p><b>Alumina crucible 1pc</b></p>
	<p><b>Zirconia bead 1bag</b></p>

