



ENJOY THE DENTISTRY DIGITALIZATION

TECHNICAL SPECIFICATION INTRAORAL SCANNER

Product type Portable intraoral scanner	Anti-fog technology Built-in module	Sensor High speed CMOS
Disinfection methods 121 & 134 autoclavable	Splicing technology Imaging Technique Accur-3D	Output format STL PLY OBJ
Scan type Power free colored scan	Image Colored	Scan mode 3D video scanning
Scan speed 2 minutes	Scan depth of field 15mm	Length of connecting cable 2m
Scanner tip 18.5mm(H) x 19mm(W)	Weight 350g	Connection USB 3.0
Scanner 240mm(L) x 39.8mm(W) x 57mm(H)		

More comfortable

No foreign body sensation
Less mouth opening time

More accurate

Fewer mistakes
Clearer details



More convenient

Online data transmission
Patients data storage

More efficient

Dentist-Patient communication
Dentist-Technician communication

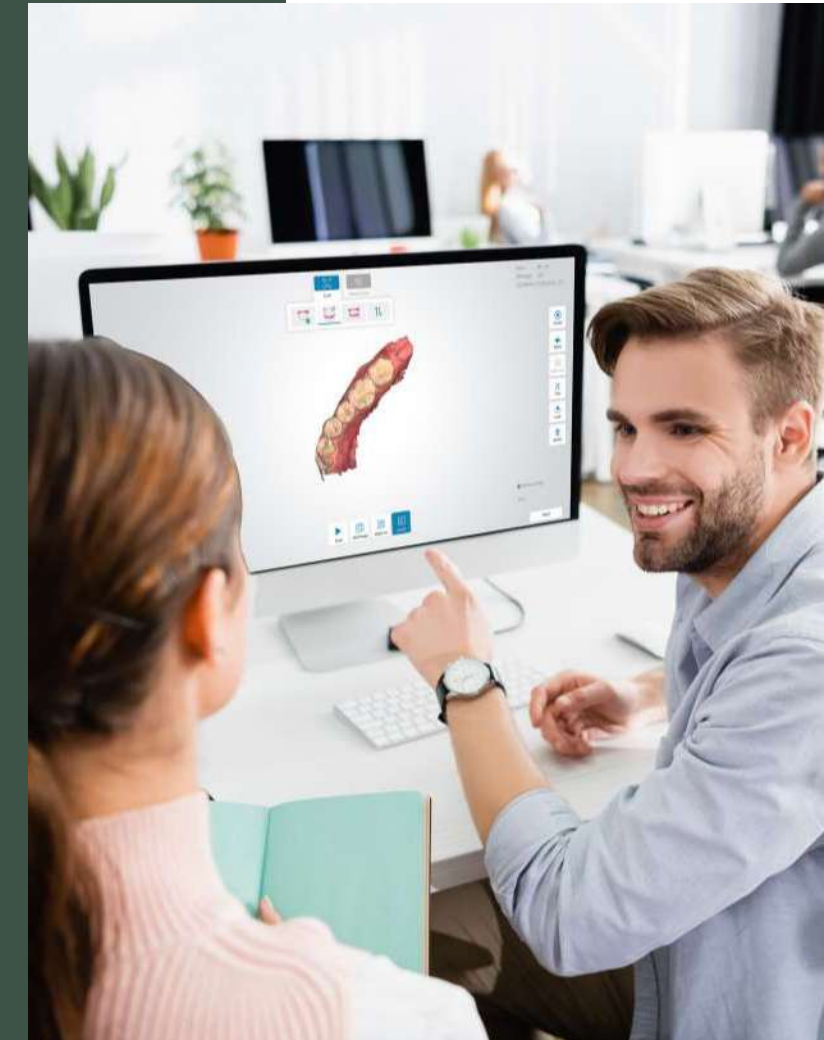


Apply to various clinical treatments

Restoration, Implant, and Orthodontics appliance

INTRAORAL SCANNER DDS300

Dynamic intraoral scanners help you easily enter the digital dentistry generation



Jiangsu Dynamic Medical Technology Co., Ltd.



WhatsApp

www.dynamicgroupglobal.com

+86 18261696472

support@dynamicgroup.cn



Ergonomic design

- Comfortable holding
- Stable hand holding

Need no calibration

- Reduce maintenance costs
- Simplify the operation process

High temperature autoclave disinfection

- Create a safer environment for dental treatment
- Comfortable treatment experience

DYNAMIC
INTRAORAL
SCANNERS
HELP YOU
EASILY ENTER
THE DIGITAL
DENTISTRY
GENERATION



INTRAORAL SCANNER

DDS300

The DDS300 uses a simpler Usb3.0 interface to connect directly to the computer, reducing unnecessary cables and simplifying the connection method to make it easier for users to use

Intelligent algorithm

- Faster scanning process
- Less working time
- More comfortable



AI OFF



AI ON

Intelligent optimization

Automatically remove any redundant data such as gloves, tongue etc.

True color scanning & imaging

- Efficient dentist-patient communication
- Clear details display
- Less rework



Humanized auxiliary function

- Efficient workflow
- Efficient dentist-technician communication
- Better adjunctive clinical treatment

