

**Aidite<sup>®</sup>**

# **A-IS Pro 3** **Digital Scanner**



# A-IS Pro 3

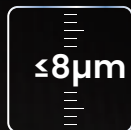
Aidite A-IS Pro 3 is a 3D dental scanner with many powerful functions for multiple applications covering scans of impressions, plaster models, articulators, implant abutments, etc. Its high-resolution cameras, advanced algorithms and user-friendly interface provide you with superior quality data, providing optimal results.



Aidite

Aidite A-IS Pro3

# Advanced Desktop Scanner



## Ultra-high Accuracy

Scan accuracy less than 8  $\mu\text{m}$  assures reliable scan result, satisfying the requirement of various applications in the dental industry.



## Unparalleled Details

Equipped with dual 5.0 MP high resolution cameras, A-IS Pro 3 can capture every detail of the components meticulously.



## Fast Speed

Bite scan: 7s  
Upper/Lower jaw scan: 14s  
1~4 dies scan: 18s  
5~8 dies scan: 30s  
Impression scan: 66s

# Powerful Software

## Flexible Workflow

Set up your own workflow as you prefer, increasing work efficiency like never before, all-in-one and triple tray are available to get complete scan data with less steps.

## Backstage Data Processing

Scan and backstage data processing can be carried out simultaneously, making the whole process more efficient.

## Flexible Workflow

The new software associated with A-IS Pro 3 can support versatile scan modes, including Multi Path Scan, High Quality Scan, AI Scan, Texture Scan, HDR Mode Scan, Reduce High Brightness Scan, etc.

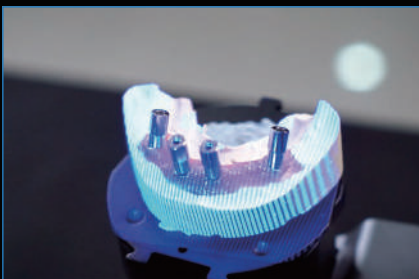




# Applications



Implant Abutment



Implant Bridge



Scanbody



Texture



Model



Articulator



Full Denture



Impression



Post and Core

# Technical Specifications

Model	A-IS Pro 3
Camera Resolution	2*5.0 MP
Accuracy	≤ 8 μm
Scan Time	Bite scan: 7s; Upper/Lower jaw scan: 14s; 1~4 dies scan: 18s; 5~8 dies scan: 30s; Impression scan: 66s
Articulator Scan	Support articulator transfer
Output Format	STL, PLY, OBJ
Light Source	Blue Light
Dimension	385*260*270 mm
Weight	5.0 Kg
Interface	USB 3.0
Power Supply	DC 24V

**Aidite®**

Aidite (Qinhuangdao) Technology Co.,Ltd.

Tel : 0086-335-8587898

Web: [www.aidite.com](http://www.aidite.com)

Email: [info@aidite.com](mailto:info@aidite.com)



[www.aidite.com](http://www.aidite.com)