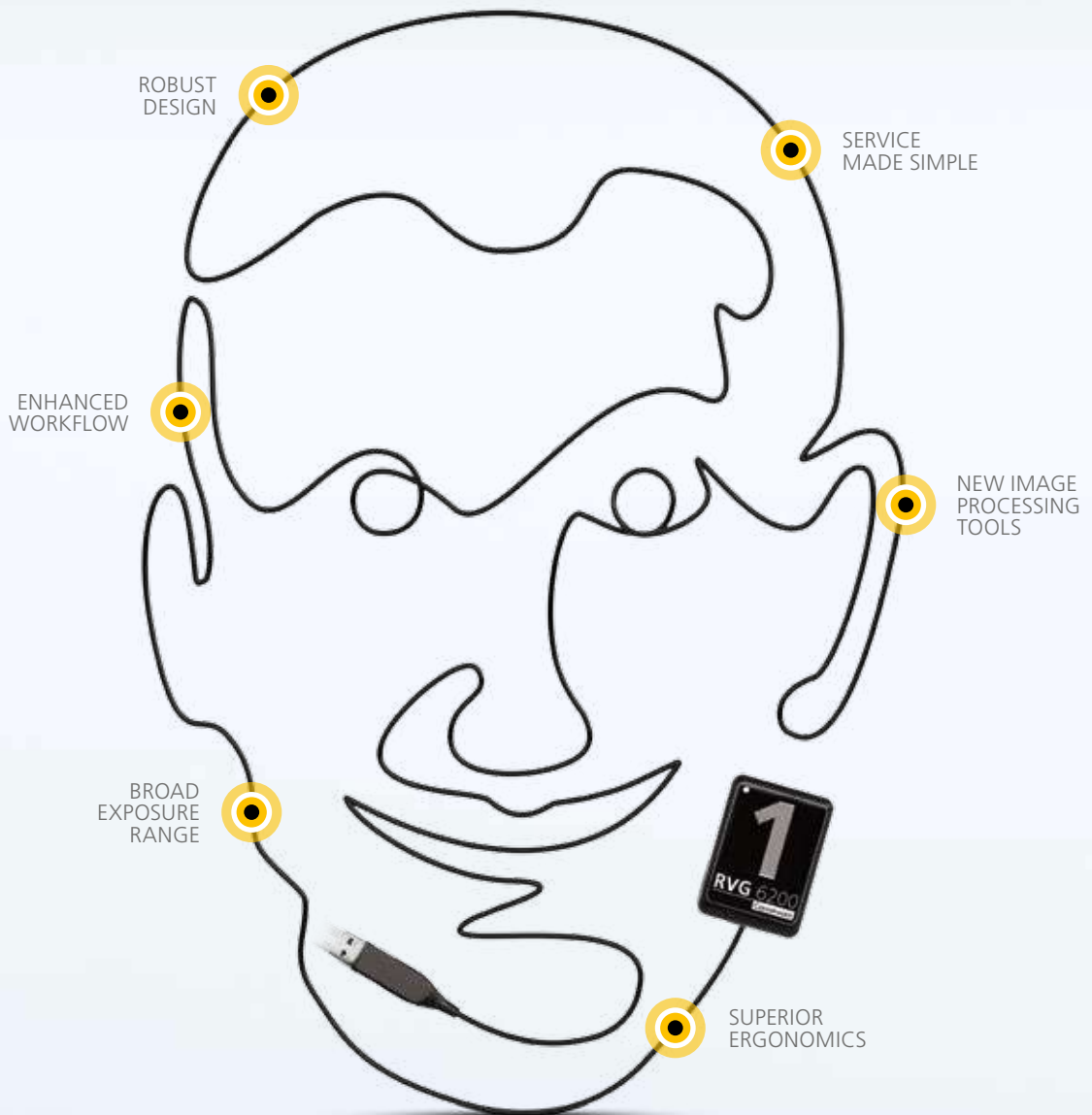


DIGITAL TECHNOLOGY SHAPED AROUND YOU



RVG 6200



REDEFINING SENSOR TECHNOLOGY
TO WORK THE WAY YOU DO





PERSONALIZE YOUR PRACTICE WITH A **SENSOR THAT ADAPTS TO YOUR NEEDS**

THE **RVG 6200** IS A PERFECT FIT

The RVG 6200 redefines intraoral imaging. As one of our latest innovations in digital intraoral imaging, it simplifies

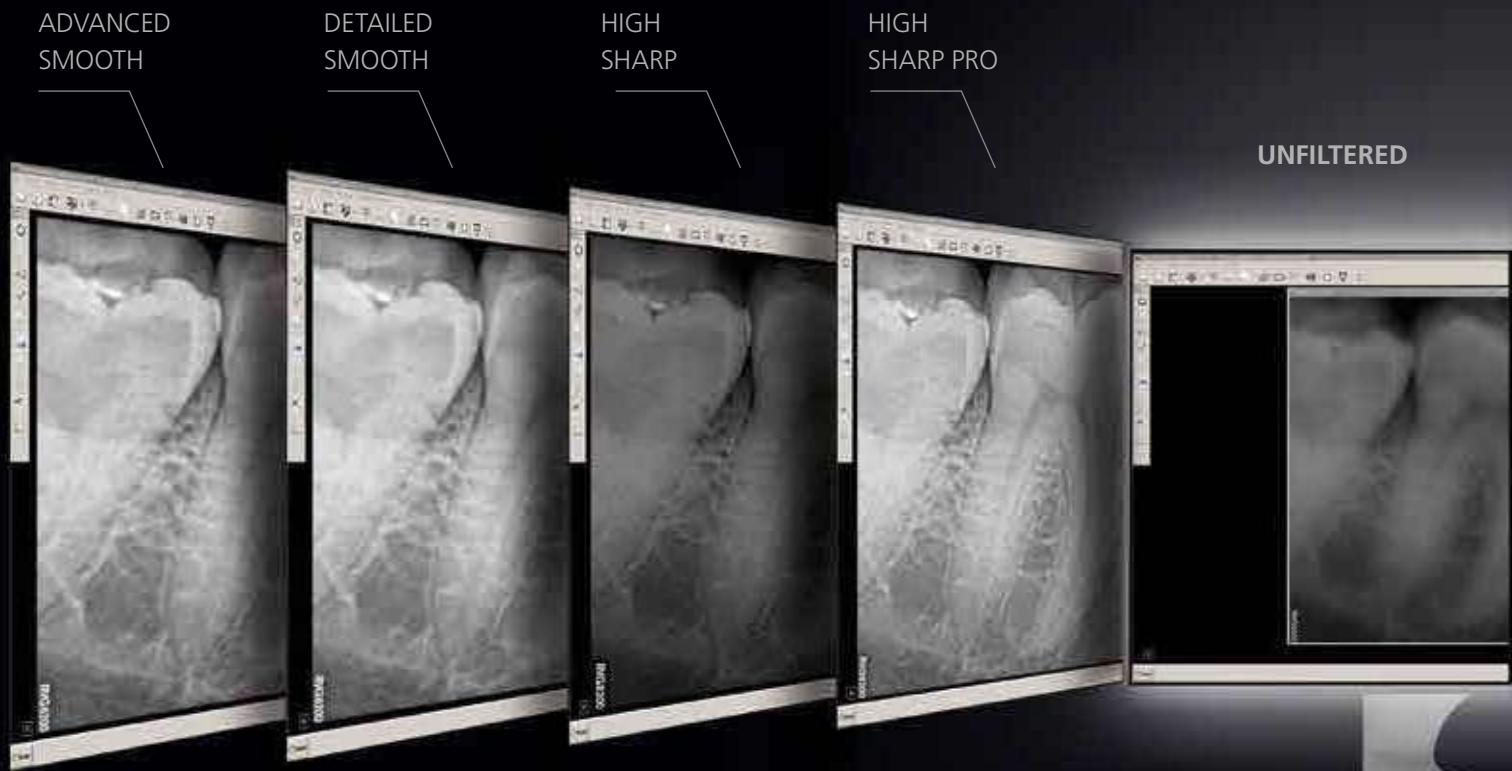
your workflow and can be customized according to your preferences.



With intuitive installation and broad software compatibility, Carestream Dental once again delivers on its promise to create humanized technology and market-leading workflow integration. With user-driven functionality, the RVG

6200 immediately integrates into your practice. And your diagnostic efficiency is increased through cutting-edge intraoral imaging, featuring sophisticated filters tailored to the way you work.

IMAGING DESIGNED WITH YOU IN MIND



High image
quality



User-defining image
processing tools

THE CS ADAPT MODULE IS SET TO YOUR PREFERENCES

The latest RVG 6200 image processing software is all about improving your diagnostic confidence – on your terms. With an excellent 24 lp/mm true image resolution and a user-friendly software interface, the RVG 6200 makes sophisticated diagnostic imaging simple and more comfortable for you.

The CS Adapt module is the result of real insights from dentists like you.¹ Using proprietary algorithms optimized specifically for the RVG 6200 sensor, it allows you to select from a broad range of anatomical visual enhancements and sharpness settings. You can customize image contrast

according to your diagnostic or visual preferences, allowing you to diagnose the way you do best.

Equipped with the CS Adapt module, the RVG 6200 now delivers the most sophisticated and powerful image processing filter pre-sets available. You can select from 40 filters in 10 pre-set families, and define up to four favorites of your own, all accessible from the RVG imaging viewing window. This results in a customized comfort zone for every practitioner, for every appointment.



CONTRAST

OPTIMIZED
CONTRAST

OPTIMIZED
SMOOTH

ULTRA-
SPEED

INSIGHT

A WORKFLOW THAT WORKS FOR YOU

The sensor offers excellent flexibility for image capture with a wide exposure range. Both accommodating and versatile, it does not require time-consuming exposure fine tuning to produce a clinically useful image. However, if needed, a convenient dose indicator also helps identify over- or under-exposures, so the operator can quickly and easily find the perfect setting.

The uniquely designed FMS interface allows for efficient and easy examinations with a simplified and personalized

image acquisition workflow. Step-by-step assistance guides the user at each stage of the FMS process, indicating which teeth need to be radiographed, reducing the risk of retakes.

With the latest user-oriented features of our most sophisticated imaging software, diagnosis has been redefined both for the benefit of your workflow and the comfort of your patients.

HARDWARE FOR HARD-KNOCKS



EXTREME TESTING FOR NEW LEVELS OF PROVEN DURABILITY

Pulls, bites and drops – our testing process simulates the tough working conditions of a busy dental practice. The new sensor design of the RVG 6200 steps up to these challenges with connection points along the cable reduced by 50%, and is injection molded for reinforced durability. Stronger and more flexible than ever before, the cable is created with protective alloy mesh for supreme flexibility and Teflon® lining to reduce friction during bending. With the RVG 6200, you're more than prepared for any situation with hardware that tests durability to the limit.

A shock resistant and waterproof casing securely protects the sensor, which is immersed in water for 24 hours to guarantee the hermetic seal. Ensuring it is both airtight and watertight eliminates any risk of damage to the CMOS, scintillator sensor or electronic components during oral use or the disinfection process.

24 hour
immersion





WITHSTANDING THE TEST OF TIME

The robust RVG 6200 is tested for 10 years of intensive use. The cable and sturdy back-connection point is exposed to over 100,000 severe flexes and is also designed to withstand forces of up to 15 lb/7kg – our best ever RVG sensor cable strength that eliminates any need for detachable cables.

And for revolutionary technology with assured long-term peace of mind, we offer simple service you can count on and our standard replacement warranty with each RVG 6200 sensor.² For unprecedented durability and technology that is safe, hygienic and built to last, the RVG 6200 is the solution for you.

Maximum
durability



YOUR WORKFLOW OPTIMIZED AND INTEGRATED

1. Position

– positioners enable correct sensor placement for accuracy and comfort



2. Expose

– the sensor is always armed and ready to acquire images



3. View

– images are acquired easier and quicker than ever before



SEAMLESS WORKFLOW INTEGRATION IN THREE EASY STEPS

With the RVG 6200, image acquisition is fast and simple. Images appear on your screen within seconds, as the fastest image capture on the market. The intuitive sensor is always ready to acquire images and no longer features a control box. Simply position, expose and view.

The RVG 6200 also eliminates the need for opening the image acquisition interface when preparing for a single image. If you encounter any problems during positioning, there is no need to rearm the sensor for acquisition.

TWAIN compatibility means the sensor can be integrated with almost any imaging and dental practice management software, including Carestream Dental practice management software.

High image
Quality



DIAGNOSED WITH CONFIDENCE



BETTER CASE ACCEPTANCE FROM ENHANCED COMMUNICATION

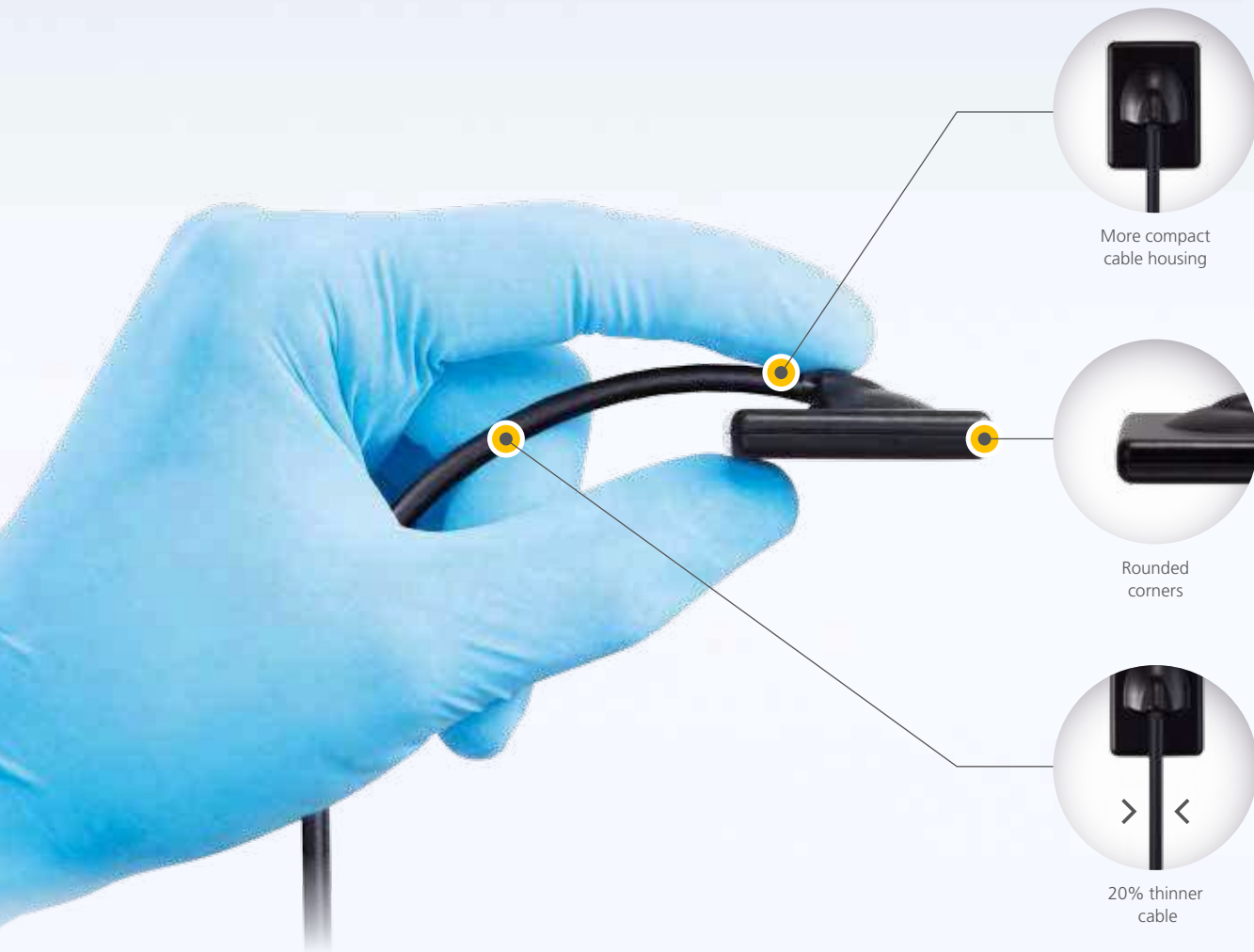
Redefining intraoral imaging with the RVG 6200 means optimizing your workflow through personalized image capture and processing. Advances in the software and hardware have set the premise for a more confident diagnosis, enhancing communication between you and your patients. And if a second opinion is required, the imaging software has a functionality that makes sharing, importing and exporting images quick and simple.

A streamlined workflow results in quicker diagnoses, and that means less time in the chair for your patients. With state-of-the-art technology creating a customized comfort zone for every appointment, explaining treatment plans and attaining case acceptance have never been easier.

User-Defined Image
Processing Tools



ERGONOMICS IMPROVED



DESIGNED FOR BETTER IMAGING AND MORE PATIENT COMFORT

The sleek design of the new sensor head with rounded corners creates a win-win situation for both you and your patients. The cable housing has been streamlined to create a more comfortable patient experience, simplifying placement and positioning of the sensor for improved image acquisition. A 20% thinner and more flexible cable prioritizes patient comfort during placement in the mouth, while enabling improved bitewing acquisition.

The RVG 6200 also includes a complete set of positioning devices to achieve a greater degree of accuracy, with more consistent images and faster image acquisition. Redefining ergonomics redefines your practice.

Improved
ergonomics



INTUITIVE AND RELIABLE INSTALLATION



A SIMPLE TRANSITION TO DIGITAL DENTISTRY

With the RVG 6200, we have created a supremely easy installation and maintenance process, making it the ideal choice for those transitioning to digital imaging for the first time, converting from another digital system, or upgrading from a previous generation RVG sensor.

Once up and running, the post-installation tool verifies that the sensor is correctly installed and checks communication with the software. Diagnosis tools also validate the sensor's image quality, and assist in troubleshooting and long-term maintenance.

Convenient,
quick start up



Technical specifications

	Size 1	Size 2
Technology	CMOS Scintillator Optical Fiber	CMOS Scintillator Optical Fiber
Pixel dimension	19 microns	19 microns
True (measured) resolution	24 lp/mm	24 lp/mm
Active area	22,2 x 29,6 mm	26,6 x 35,5 mm
Overall dimensions	27,6 x 37,7 mm	32,2 x 44,2 mm
Cable length	2,8 meters	2,8 meters
Sensor plate thickness	7,3 mm	7,3 mm
Gray scale	4096 gray levels (12 bits)	4096 gray levels (12 bits)
Input voltage (from USB interface)	5V	5V



Smart accessories

The RVG 6200 system comes with all the accessories you need to optimize your image processing, including a sample pack of disposable hygienic sheaths, positioners and wall mounting holders.



Toothbrush-type holders



Hygienic sheaths

LET'S REDEFINE EXPERTISE

The RVG 6200 is just one way we redefine imaging. And now we've done it again with CS Adapt. Discover more at carestreamdental.com or contact your local authorized dealer.