

cameo®



CMW-400 CMD-500





CMW-400&CMD-500
What are the differences?

	CMW-400	CMD-500
Number of axes	4	5
Processing mode	wet	dry
Spindle	high rotation speed	high torque
Millable material	glass ceramic/ premill abutment/ PMMA	zirconia/ PMMA/ wax
98mm C-Clamp holder		✓
98mm C-Clamp holder with secondary plastic		optional
Holder for glass ceramic and premill abutment	✓	
Block holder		✓



cameo
CMD-500



cameo
CMW-400



Cameo chairside system

IOS

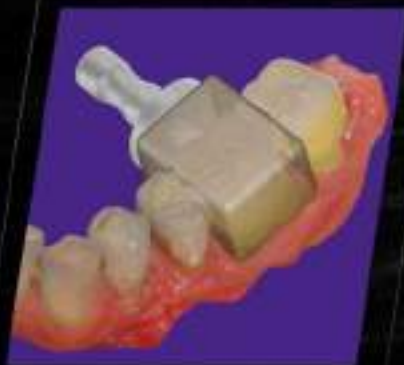


Cameo Intraoral Scanner
Cameo Elegant 3
Cameo Rapid 56000
3shape TRIOS 3

CAD

exocad

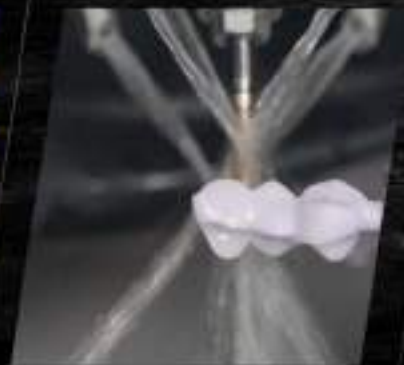
Exocad ChairsideCAD



CAM



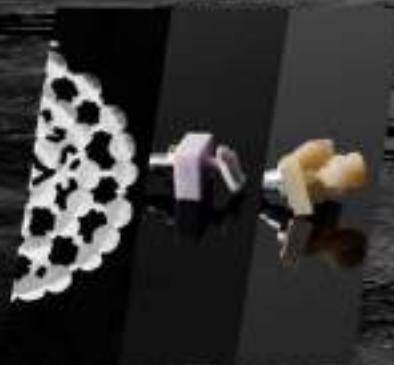
Hyperdent
Millbox
worknc



Materials



Pre-sintered zirconia / Premilled /
Glass ceramic / Wax / Composite /
PMMA / PEEK



Milling



CMW-400

CMD-500

Result



Veneer



Inlay, Onlay



Crown, Bridge



Abutment



Denture



Temporary crown/
bridge



Cameo CMW-400

THE INTELLIGENT CHAIRSIDE WET MILLING SOLUTION

The new Cameo CMW-400 is the perfect choice for wet milling equipment in the chairside system. Because of the new design and development concept, CMW-400 can excellently complete the processing of glass ceramics, premill abutment, PMMA.

The high-quality one-piece cast aluminum construction ensures maximum stability with a minimum equipment size. The shell adopts ABS injection molding process, and the overall texture is greatly improved, which is more in line with the appearance of a chairside milling machine. Meantime, a series of intelligent designs, such as smart tool replacement, three-color light running status prompts, security lock, milling fluid flow detection, allowing dentists to operate CMW-400 in a more economical, safer and faster way to complete the chairside milling.



Cameo CMW-400 Highlights



High-quality one-piece cast aluminum construction. Miniaturized design.



Optimized for the integrated CAD/CAM workflow with exocad. Fast processing of glass ceramic and premill abutment. Smart tool replacement.



Security lock. Tool life detection. Milling fluid detection.



Integrated water tank.





Cameo CMD-500

THE INTELLIGENT CHAIRSIDE Dry MILLING SOLUTION

The new Cameo CMD-500 is the perfect choice for wet milling equipment in the chairside system. Because of the new design and development concept, CMD-500 can excellently complete the processing of zirconia, PMMA.

The high-quality one-piece cast aluminum construction ensures maximum stability with a minimum equipment size. Using the 5-axis simultaneous technology, also the C-type holder and block holder can be integrated in addition to the single universal holder. This ensures it easier for dentists to use materials of different sizes. Meantime, a series of intelligent designs, such as smart tool replacement, three-color light running status prompts, security lock, allowing dentists to operate CMD-500 in a more economical, safer and faster way to complete the chairside milling.



Cameo CMD-500 Highlights



5-axis simultaneous.
High-quality one-piece cast aluminum construction.



Optimized for the integrated CAD/CAM workflow with exocad.
Fast processing of zirconia.
C-type fixture achieving 90° vertical processing.



Ionizer equipped for easy cleaning.
Smart tool replacement.



Security lock.
Tool life detection.



Veneer



Inlay, Onlay



Crown, Bridge
(6/14 units)



Denture



Temporary crown/
bridge



 **CMW-400&CMD-500 Holders**

Block holder for CMW-400

- 3 positions, suitable for glass-ceramic and PMMA block
- Glass-ceramic size I12/C14/C16/B32/B40 available
- PMMA size 18*13*15/20*15*14/20*15*19/40*15*14/40*15*19/55*15.5*19 available
- Only P1 and P3 stations can be installed when the width of the processed material exceeds 16mm.



CMW-400

Premilled abutment holder for CMW-400

- 3 positions, suitable for premilled abutment
- Integrated systems Arum, Geo, manix, Yenadent, NT-trading.
- Arum system standard, other system holder optional



CMW-400

Half-open blank holder (C-CLAMP)

- Enables 5-axis milling up to 90 degrees axis adjustment
- Maximum material thickness 35mm



CMD-500

Half-open blank holder (C-CLAMP with plastic secondary clamps)

- Enables 5-axis milling up to 90 degrees axis adjustment
- Higher material nesting utilization
- Easy repeat loading, alignment



CMD-500

Block holder for CMD-500

- 3 positions, suitable for zirconia and PMMA block
- Size: 18*13*15/20*15*14/20*15*19/40*15*14/40*15*19/55*15.5*19 available



CMD-500



Suction unit

SILENT compactCAM

A Renfert extraction unit, specially developed for optimized use with compact, dental CAM units.



Suction turbine power	460 W (220 V)
Volume flow (max.)	2500 l/min (1.47 ft ³ /s)
LpA** (at max. volume flow)	56,9 dB(A)
Dimensions (W x H x D)	245 x 440 x 500 mm
Fill level dust drawer	approx. 2,6 l


Cameo R-401

The Cameo R-401 vacuum cleaner was developed for chairside systems and is compact in appearance to meet vacuuming needs. It can also be connected to the device via a connection cable to enable automatic start/stop vacuuming.



Suction turbine power	120 W (220 V)
Volume flow (max.)	4200 l/min
LpA** (at max. volume flow)	60 dB(A)
Dimensions (W x H x D)	255 x 400 x 540 mm
Fill level dust drawer	approx. 2,5 l




 **Cameo CMD-500
Tools**

Zirconia

<p>T1 2.0/4.0 mm roto/diamond coated</p>  <p>MB3604Z</p>	<p>T2 1.0/4.0 mm roto/diamond coated</p>  <p>MB3603Z</p>	<p>T3 0.6/4.0 mm roto/diamond coated</p>  <p>MB3602Z</p>	<p>T4 0.3/4.0 mm roto/diamond coated</p>  <p>MB3601Z</p>
<p>T8 1.5/4.0 mm flat/diamond coated</p>  <p>MB3607Z</p>			

PMMA

<p>T3 0.6/4.0 mm roto/diamond coated</p>  <p>MB3602Z</p>	<p>T4 0.3/4.0 mm roto/diamond coated</p>  <p>MB3601Z</p>	<p>T6 1.0/4.0 mm roto</p>  <p>MB3605P</p>	<p>T5 2.0/4.0 mm roto</p>  <p>MB3606P</p>
<p>T8 1.5/4.0 mm flat/diamond coated</p>  <p>MB3607Z</p>			

 **Cameo CMW-400
Tools**

Glass ceramic

<p>T1 2.5/4.0 mm roto/diamond</p>  <p>MB3704G</p>	<p>T2 1.0/4.0 mm roto/diamond</p>  <p>MB3702G</p>	<p>T3 0.6/4.0 mm roto/diamond</p>  <p>MB3701G</p>	<p>T6 1.5/4.0 mm flat/diamond</p>  <p>MB3703G</p>
--	--	--	--


Premilled abutment

<p>T1 2.5/4.0 mm roto</p>  <p>MB3712M</p>	<p>T2 1.5/4.0 mm roto</p>  <p>MB3711M</p>	<p>T3 1.0/4.0 mm roto</p>  <p>MB3710M</p>
--	--	--

PMMA

<p>T1 2.0/4.0 mm roto</p>  <p>MB3709P</p>	<p>T2 1.0/4.0 mm roto</p>  <p>MB3707P</p>	<p>T3 0.6/4.0 mm roto</p>  <p>MB3706P</p>	<p>T4 0.3/4.0 mm roto</p>  <p>MB3705P</p>
<p>T6 1.5/4.0 mm flat</p>  <p>MB3708P</p>			




 **CMW-400&CMD-500**
Dimensions


CMW-400



CMD-500



 **CMW-400&CMD-500**
Specific parameters

 **After-sales service**

	CMW-400	CMD-500
Basic construction	aluminium	aluminium
Number of axes / operation type	4 axes simultaneous processing	5 axes simultaneous processing
Rotation angle	A-axis 360°	A-axis 360° / B-axis +30, -120°
Spindle / power	high-frequency spindle / 0.45 kW	high-frequency spindle / 0.45 kW
Maximum spindle speed	80000 rpm	60000 rpm
Tools	4 mm shaft diameter	4 mm shaft diameter
Tool changer	6-fold*3(glass ceramic/ premill abutment/ PMMA)	8-fold
Tool length control	≤ 0.002 mm precision	≤ 0.002 mm precision
Monitor	integrated 8.1" touch screen	integrated 10.1" touch screen
Illumination	3 LED status colors	3 LED status colors
CAM software	Hyperdent/ Millbox	Hyperdent/ Millbox
Air pressure	0.6MPa	0.6MPa
Cooling system	air-cooling	air-cooling
Connecting requirements		
Weight	80kg	120kg
Width x depth x height	430*580*650	520*655*685
Line voltage / frequency	1PH AC 100-240V	1PH AC 100-240V



China headquarters remote service
Local services in the United States, South Korea, Australia, Europe, Saudi Arabia and India

Aidite[®]



Aidite (Qinhuangdao) Technology Co.,Ltd.

Tel: 0086-335-8587898

Fax: 0086-335-8587198

Web: www.aidite.com

Email: info@aidite.com

CFDA ISO13485 CE0197 FDAK111291