



# MoonRAY

Wireless Desktop 3D Printer

World's 1st Desktop 3D Printer Calibrated for Digital Dentistry





## Fully Integrated for Digital Dentistry

MoonRay D is an all-in-one system for digital dentistry that allows you to quickly and easily print accurate crowns and copings, surgical guides, and other dental models.

At the core of MoonRay D is the RayOne<sup>®</sup> DLP projector, developed for 3D printing and calibrated for use in the dental industry. RayOne<sup>®</sup> works with our custom-formulated materials, including castable resin and biocompatible resins. The 3D-printing process is simplified by RayWare Dental, our powerful software created specifically for dental professionals.

MoonRay D's hardware, software, and materials work together to deliver optimal accuracy, efficiency, and ease of use for the dental industry.



## High-Resolution, Fast, and Accurate

MoonRay D makes it simple to print precise dental models from intraoral or other 3D scans. MoonRay D's resolution is two times better than laser SLA 3D printers, ensuring accurate and intricate details on your printed dental models. Its core technology also makes it up to ten times faster than other 3D printers, so you can go from 3D scan to printed model in two hours.

Z Resolution

**20 Microns**

Minimum Layer Thickness

Consistent Print Speed

**Up to 10x Faster**

When Compared to Laser SLA

XY Resolution

**75 Microns**

Minimum Feature Size



## Streamline Your Work Process

MoonRay D's fast DLP technology, generous build envelope, and affordable materials make it an efficient investment. Here's an estimate of the costs and production times for the most common types of dental parts when printed with MoonRay D:



### Precise Dental Models

3-5 Models / 1.5 Hours

\$0.5-\$2 / Model



### Crowns, Copings, and Bridges

30-40 Models / 2 Hours

\$0.4 / Model



### Surgical Drill Guides

3-5 Models / 2 Hours

\$0.40-\$2 / Model



### Custom Dental Trays

2-4 Models / 4 Hours

\$1-\$3 / Model



Custom-built UV Projector  
**405nm**  
Blue-violet Light Engine

## Custom-Built Projector for 3D Printing

RayOne<sup>®</sup> LED DLP projector hits the correct light wavelength consistently across the build platform for improved resin-curing control and dimensional stability. It's also amazingly fast, printing at speeds of up to one vertical inch per hour.

RayOne<sup>®</sup> is manufactured with high-quality components and calibrated for digital dentistry.



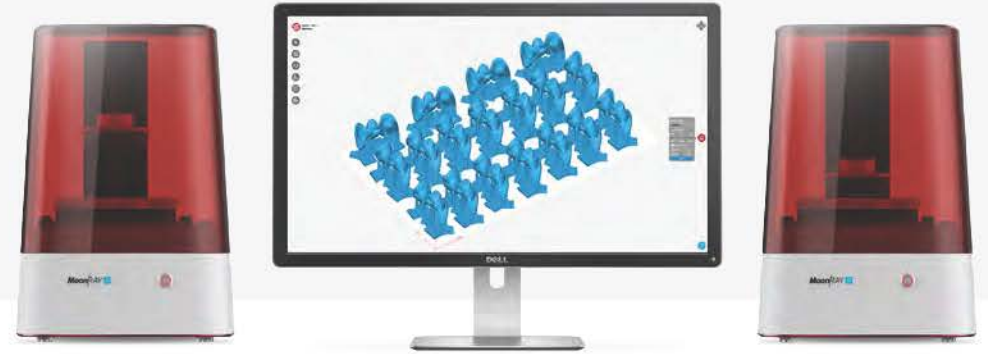
MoonRay D Resin Tank  
**Up to 50 Liters**  
Extended Lifetime

## Durable, Cost-Effective Resin Tank

MoonRay D's resin tank was built to last. We've put an end to costly resin tank maintenance - you no longer need to replace your resin tank regularly or change the PDMS layer.

Our unique resin tank design lasts up to 25 times longer than the resin tanks of similar 3D printers.

Compatible with  
**Mac / Windows**  
Fully Supported and Optimized



## Powerful, Easy-to-Use Software

MoonRay D strikes the right balance between wireless and connected. Within RayWare Dental, you can check for a detailed print status update, including time remaining, and quickly see which machines are ready to begin a new print.

RayWare Dental software is compatible with common 3D file types from intraoral scanners and allows you to start printing in just a few clicks. It will guide you through the printing process, generate necessary supports, and provide recommended settings and materials to ensure your parts print properly every time.

## What' s in the package:

MoonRay D 3D Printer

RayWare Dental Software Access

Resin Tank

Spare Resin Drum

Build Platform

1 Liter of Dental Resin

Finishing Kit

Power Supply

Ethernet Cable

