

**FUSSEN**



## **Intraoral Scanner**

Fast, Accurate, Convenient

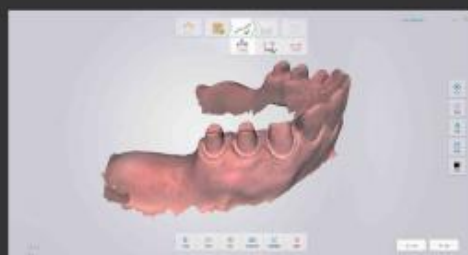
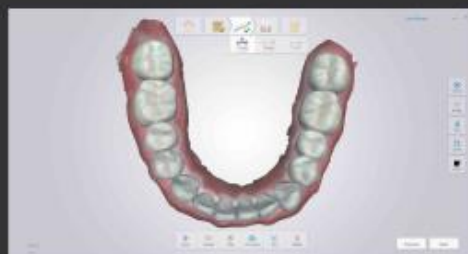
## About Fussen

Fussen is one of the leading companies specialized in developing, manufacturing and marketing Dental product. Established in 2010 .to offer a better Digital Dental Imaging Solution for dentist .Product range covers Intraoral Sensor, Imaging Plate Scanner, Cone Beam CT,3D Scanner, Intraoral Camera .Fussen GmbH is situated on Stuttgart ,Germany to offer Fussen product with the best service to European dentist. Fussen keep a German quality control during the manufacturing.

Fussen image is one brand of DentaLink which is based on high quality oral imaging products. Fussen image hold the goal to bring customers the greatest value and service through R & D innovation. The team members are professionals from dental digital imaging R & D, medical IT, dental supplies, they has achieved their 20 national patent invention until now.

### Scanning Without Powder

Reduce the difficulty and complexity of clinical practice  
Enhance experience of patient comfort



### Color Scanning

Reflect the actual situation of the mouth  
Distinguish the Flap and sclerous tissues



## Portable Design

Small volume, easy to install and store  
Convenient to bring it and using in different  
consulting room of clinic.

## 4D High Resolution Scanning

Shorten the clinical operation time and enhance efficiency  
Real-time display of scanning data, dental can diagnose and analyze the data



## Small Scanner Tip

Small size of head is apply to different opening degree of mouth  
Scanning head can be disassembled and disinfected, easy to replaced and used



## Infection Control

Scanner's tip is support the sterilization of high temperature and immersion in order to protect cross infection.

## High Precision And Fast

- The highest accuracy of scanning up to 25 $\mu$ m, can satisfy the clinical needs
- Full arches and occlusion scanning  $\leq$  5 minutes



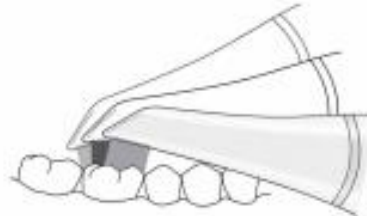
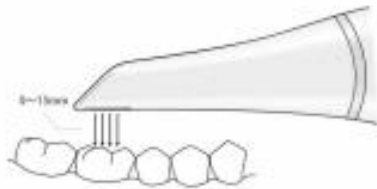
Traditional impression



Digital impression

## large depth of field

15mm large depth of field for Multi-angle scanning without dead ends, to keep the data intact.



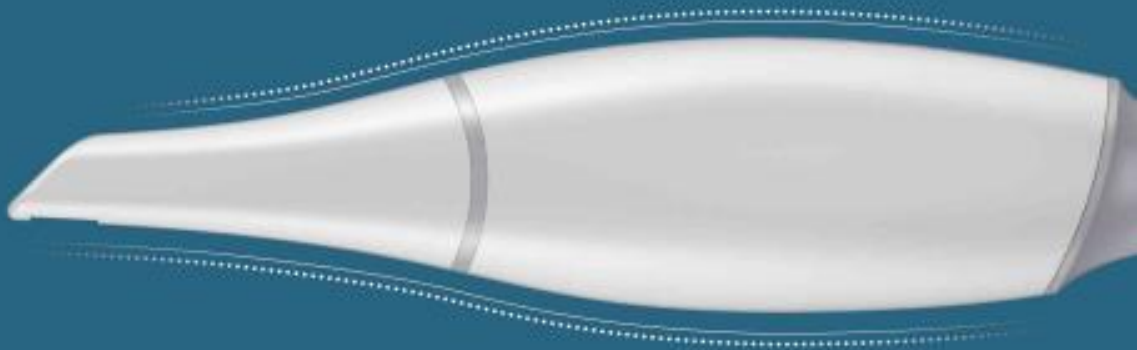
## Anti-fog function by built-in heater

Anti-fog function by built-in heater, to provide a complete protection for a one-time collection of data.



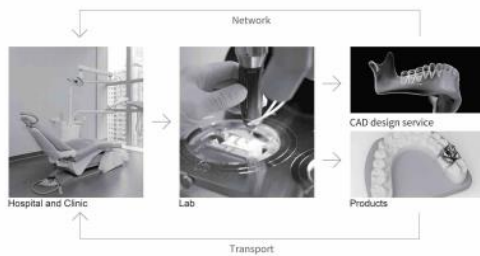
## Ergonomic Design

Compact pen-style design. Streamlined design of the shape is more comfortable, and in accordance with Ergonomic design.



### Data format is open-ended

Export the STL format without encrypted, and compatible CAD design of software  
Data can be transferred to Machining Center from Cloud, and also to exported through other means



### Technical Parameter

<b>Product form</b> Portable intraoral scanner	<b>Anti-fog technology</b> Automatic heating
<b>Sensor</b> High-speed CMOS	<b>Infection control</b> Autoclavable/ cold sterile
<b>Splicing technology</b> Accur-3D automatic stitching	<b>Scanner file output</b> STL, PLY
<b>Scanner type</b> Color scanning without power	<b>Clinical Indication</b> Restorations, Implant-borne restorations, Orthodontics, etc
<b>Scanning technology</b> 3D video	<b>Cabel length</b> 2m
<b>Scan speed</b> Full arches and occlusion ≤5 minutes	<b>Digital connection</b> USB 3.0
<b>Scanner accuracy</b> 25 μm	<b>Scanner dimensions</b> 240mm(L) x 39.8mm(W) x 57mm(H)
<b>Tip dimensions</b> 18.5mm(H) x 19mm(W)	<b>Weight</b> 350g
<b>Depth of field</b> 15mm	