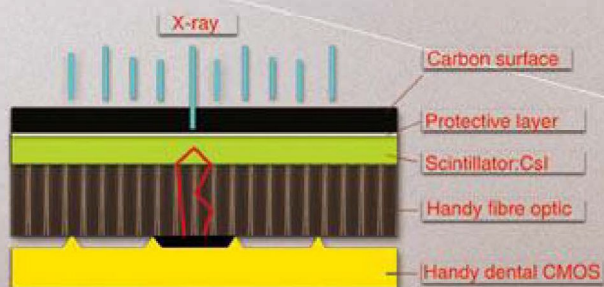




# HDR



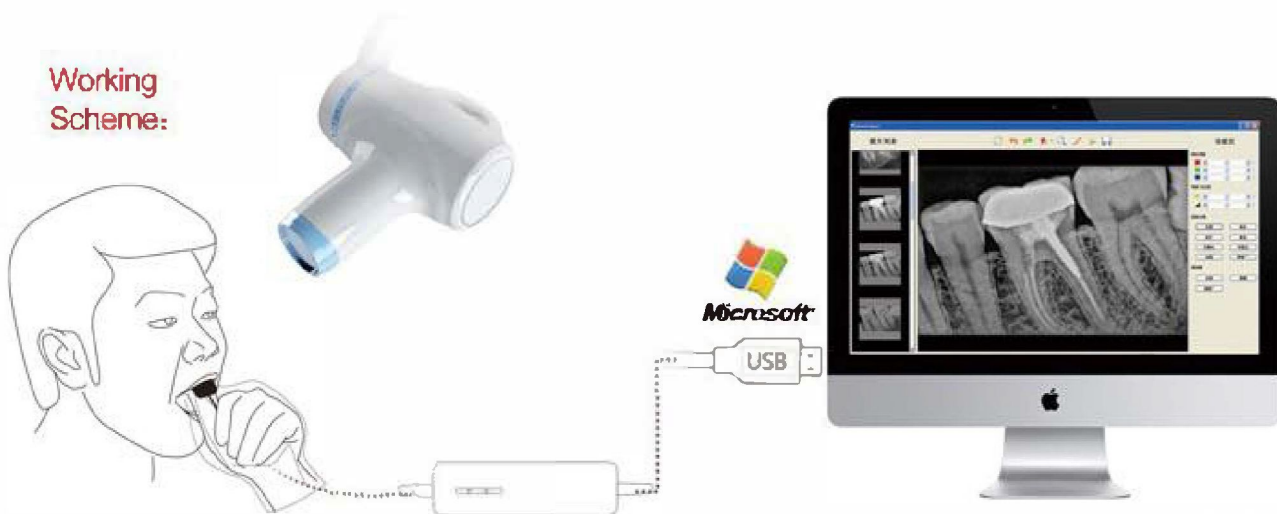
**Advanced FPS with CSI:Ti technology:**  
Higher sensitivity plus higher resolution  
Best image quality with lowest X-ray dose.



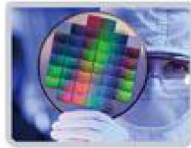
# HDR

Dental Digital X-ray Sensor HDR 500/600

Working Scheme:

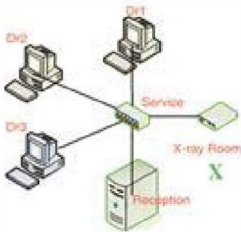


**APS CMOS technology:**  
18.5µm pixel size  
5T pixel type  
Real resolution > 20 lp/mm.



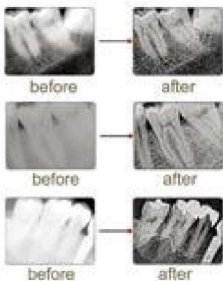
**Multi-user solution**

The idea of <HandyDentist > management system is to provide multiuser solution. Sharing information in database. Plug and play connector make the sensor transferable from room to room.



**New HandyDentist software:**


Powerful image processing & preprocessing  
Easy to operate  
Multi-user solution  
Connectable to the most management systems on the market under DICOM3.0 protocol.



**The Effect of image process**  
"Optimizer" increase the intensity of contrast, make dentist feel easier to read the image.



TWAIN driver, which is compatible with the softwares of KODAK, SIRONA, SCHICK, etc.

Specification		
Item	HDR 500	HDR 600
Sensor		
Chip Type	CMOS APS	
Fiber Optical Plate	Yes	
Scintillator	GOS/CsI	
Dimension	27.5 x 38.5 mm	32.3 x 44.3 mm
Active Area	22.5 x 30 mm	27 x 36 mm
	675mm <sup>2</sup>	972mm <sup>2</sup>
Pixel size	18.5µm	
Image Pixel	1.9M(1600*1200)	2.7M(1920*1440)
Resolution (lp/mm)	Theoretical:27lp/mm Measured:12-14 lp/mm(GOS) 16-20 lp/mm(CsL)	
Operation	Windows 2000/XP/Vista/ Win7/WIn8(32bit&64bit)	
Additional	TWAIN Driver	